



**ALASKA DIVISION OF HOMELAND SECURITY &  
EMERGENCY MANAGEMENT**



**SITUATION REPORT 20-357 • DEC 22, 2020**

Toll-Free 1.800.478.2337

Anchorage Area 907.428.7000

SEOC 907.428.7100

|                                                                                                                           |                                                                                                            |                                                                                                                                                                           |
|---------------------------------------------------------------------------------------------------------------------------|------------------------------------------------------------------------------------------------------------|---------------------------------------------------------------------------------------------------------------------------------------------------------------------------|
| <p><b><u>SEOC Preparedness Level</u></b></p> <p>Level 3 - Ongoing Active Response -<br/>2020 December Southeast Storm</p> | <p><a href="http://ready.alaska.gov">http://ready.alaska.gov</a></p>                                       | <p><b><u>National Terrorism Advisory System:</u></b></p> <p>View this site for the latest NTAS<br/>bulletin: <a href="#">read the current NTAS<br/>Bulletin here.</a></p> |
| <p><b><u>Maritime Security (MARSEC)</u></b></p> <p>Level:1-Minimum Appropriate<br/>Security Measures</p>                  | <p><b>WHO Novel Coronavirus Pandemic<br/>(COVID-19):</b></p> <p><a href="#">2019 Novel Coronavirus</a></p> | <p><b><u>Alaska Military Installation Force<br/>Protection Level:</u></b> FPCON Bravo</p>                                                                                 |

(Significant changes from previous situation reports are in red.)

**THREAT LEVEL CHANGES:**

None

**Significant Issues:**

SEOC remains at Level 3 monitoring a serious storm impacting the Kenai Peninsula and Alaska's Gulf Coast and supporting Southeast Alaska's transition from response to recovery operations following the December storms and landslides.

**Coronavirus (COVID-19) Pandemic:**

A unified command has been established at the SEOC. The SEOC continues to support statewide response to COVID-19.

**State of Alaska Department of Health and Social Services (DHSS)**

DHSS is operating as the Medical Branch under the State EOC/Unified Command.

For more information about the outbreak refer to:

<https://covid19.alaska.gov/>

<https://www.cdc.gov/coronavirus/2019-ncov/index.html>

The Alaska DHSS website is located at <http://dhss.alaska.gov/Pages/default.aspx>

**NTAS BULLETIN**

To read current advisories, select the link below.

<https://www.dhs.gov/national-terrorism-advisory-system>

## Travel Alerts and Conditions

COVID-19 Health Orders may affect travel. Check <https://covid19.alaska.gov/> for current Health Orders.

For current driving conditions dial 511 or link to <http://511.alaska.gov/>

## Recent Earthquakes

USGS Earthquake Information: <http://earthquake.usgs.gov/>

National Tsunami Warning Center: <http://ntwc.arh.noaa.gov/>

## Alaska Volcanoes

For Alaska Volcano updates, go to: <https://www.avo.alaska.edu/>

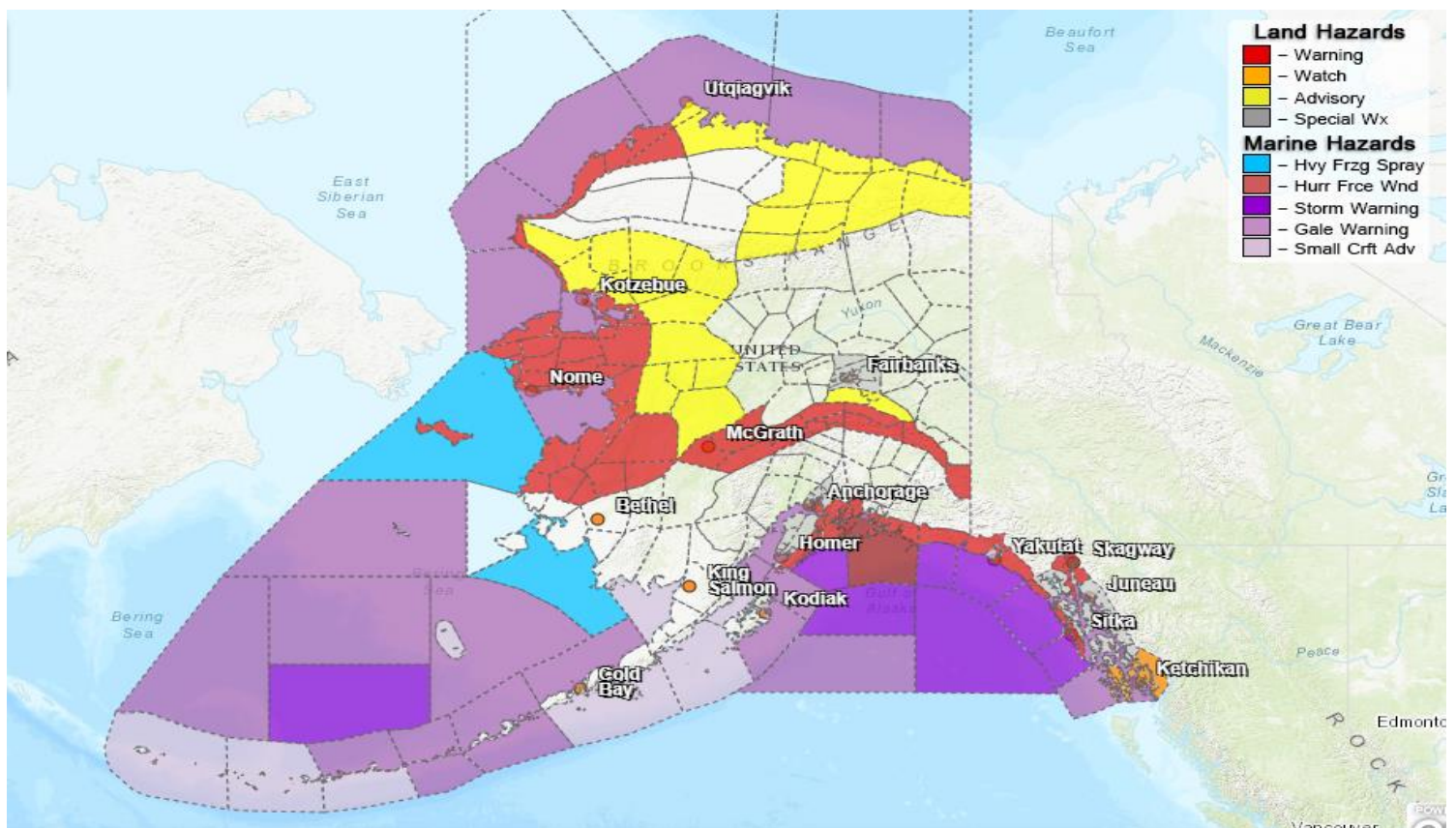
## Air Quality Index (AQI) Advisories

Stage 1 Alert Air Quality Advisories have been issued for Fairbanks Zone and a Stage 2 Alert is in effect for the North Pole Zone until 11:00 am today.

For the most up to date Air Quality Index Advisories:

<http://dec.alaska.gov/Applications/Air/airtoolsweb/Home/Index>

## Significant Weather:



A Blizzard Warning is in effect for the following areas:

- St. Lawrence Island & Bering Strait Coast until 9:00 P.M. today. Winds gusting as high as 65mph will cause widespread blowing and drifting snow, reducing visibility to one-quarter mile or less at times. Total snow accumulations of up to 5 inches are possible.

- Yukon Delta from noon today until 6:00 P.M. today. Winds gusting as high as 50mph will cause widespread blowing and drifting snow, reducing visibility to one-quarter mile or less at times. Total snow accumulations of up to 4 inches are possible.
- Western Prince William Sound until 9:00 A.M. today. Additional snow accumulations of up to 12 inches are expected with winds gusting as high as 90mph through Portage Valley.

A Winter Storm Warning is in effect for the following areas:

- Eastern Norton Sound, Nulato Hills & the Lower Yukon Valley until 9:00 P.M. today. Heavy blowing snow possible with total accumulations of up to 10 inches. Winds gusting to 50mph will cause areas of blowing and drifting snow.
- Chukchi Sea Coast, Baldwin Peninsula, and the Seward Peninsula until midnight tonight. Total snow accumulations of up to 4 inches with winds gusting as high as 65mph will cause areas of blowing and drifting snow.
- Haines Borough, Lynn Canal, Taiya Inlet & the Klondike Highway from 6:00 P.M. today until 9:00 A.M. Wednesday. Heavy snow possible, total snow accumulations of 6 to 13 inches possible with winds gusting as high as 45mph near White Pass.
- Misty Fjords & Hyder until 3:00 A.M. Thursday. Heavy snow is possible with total accumulations of 14 to 18 inches.

A High Wind Warning is in effect for the following areas:

- Upper Kuskokwim Valley, Denali, and the Eastern Alaska Range until 6:00 A.M. tomorrow. Southeast winds of 75mph are expected in the region.
- Anchorage from until 6:00 P.M. today. East winds 60 to 80 mph with peak wind gusts as high as 100 mph expected for Turnagain Arm and higher elevations.
- Western Prince William Sound & Cordova until 6:00 P.M. today. East winds 40 to 65mph with gusts to 90mph are expected. Peak winds are expected through the day today, primarily through Portage Valley. Very heavy snow will accompany the winds in many areas.
- The northeast and eastern Gulf Coast including Sitka, Yakutat, Port Alexander, Elfin Cove, and Pelican until 6:00 A.M. tomorrow. Southeast winds 25 to 40 mph with gusts around 60 mph possible.

A High Wind Watch is in effect for the following areas:

- Southeast Gulf Coast including Ketchikan, Hydaburg, Metlakatla, Craig, Hollis, Throne Bay & Klawock. Southeast winds of 25 to 35mph with gusts to 60mph are possible from late tonight through Wednesday morning.

A Wind Chill Advisory is in effect for the Northeastern Brooks Range in the area north of Sagwon. Sustained wind speeds of 15 mph or more will create low wind chills to 55 below zero.

A Flood Advisory is in effect for the Western Prince William Sound and Western Kenai Peninsula until 1:00 P.M. tomorrow. Heavy snowfall transitioning to rain throughout the day today along with warming temperatures may result in ice jams and minor flooding throughout the area.

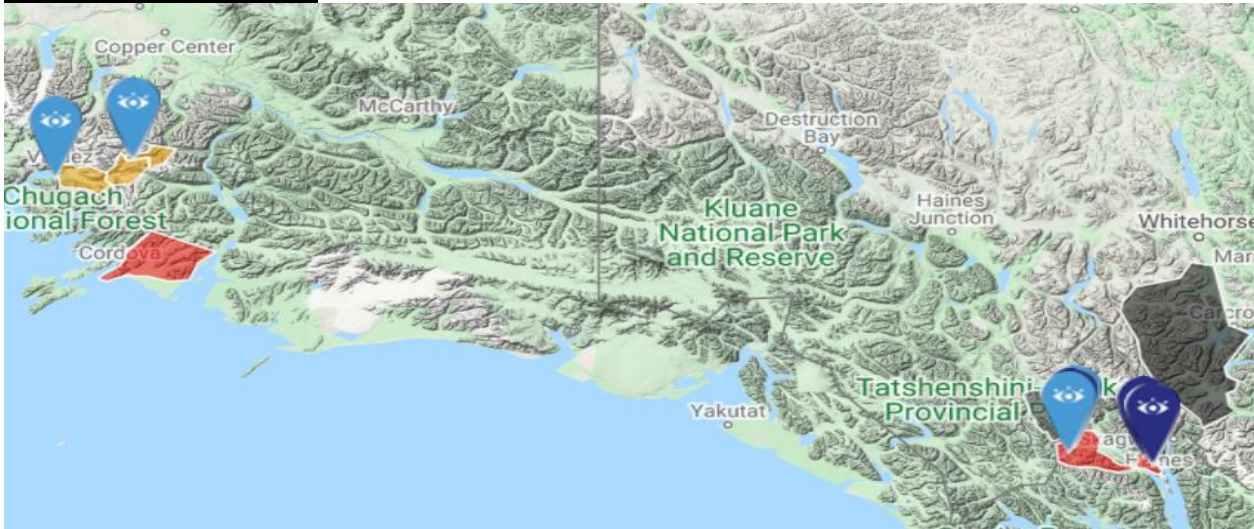
A Special Weather Statement is in effect for the following areas:

- Mat-Su Valley: A strong frontal system moving across Southcentral will cause winds to increase out of the Knik and Matanuska River Valleys late tonight through Tuesday morning. Gusts up to 60 mph are possible.

- Western Kenai Peninsula: Blowing snow to reduce visibilities from the Homer Bluff North to Clam Gulch Tuesday night into Wednesday. Gusty south to southwest winds are also expected at the same time as the snow.

For more information and the most current weather, Watches / Warnings / Advisories go to:  
<http://www.weather.gov/arh>

### **Avalanche Forecast:**



- Areas near Valdez, and along the Richardson Highway with Moderate risk.
- Areas near Cordova, Haines, & Chilkat Pass with High risk.

Check the Avalanche Forecast Center closest to your area for the most up to date information on Avalanche potential. <https://alaskasnow.org/> or <https://www.weather.gov/afc/avalanche>

### **Spills of Oil and Hazardous Substances**

The ADEC Spill Prevention and Response page is located at:

<http://dec.alaska.gov/spar/ppr/spill-information/response/>

### **Alaska Cyber Security Information**

State Employees may sign up for cybersecurity notifications and alerts at

<https://oit.alaska.gov/Security>

**The Next Situation Report:** will be **23** December 2020. A significant change in the situation or the threat level will prompt an interim report.

This report is posted on the internet at <https://ready.alaska.gov/sitrep>. To register for email distribution, go to <http://list.state.ak.us/mailman/listinfo/dhsem.situation.report>. Direct questions regarding this report to the SEOC at 907-428-7100 or [seoc@alaska.gov](mailto:seoc@alaska.gov).